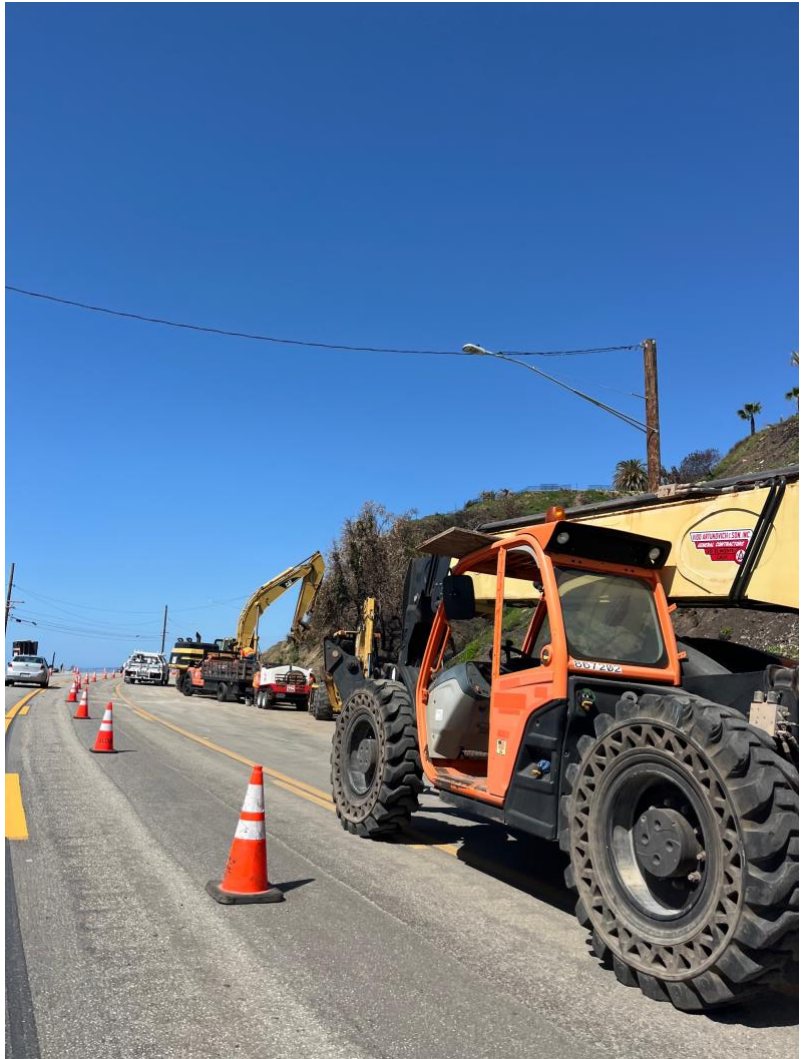


REPORT from ACE Operations:



The Army Corps has turned Temescal Canyon Rd into a vast debris collection, sorting and hauling operation. Trucks, now totaling nearly 500 a day (more than 100 crews), clear debris from lots that have opted-in, haul the debris to the site on Temescal Canyon Rd. where the loads are sorted into concrete (cleaned, crushed and reduced for reuse in roadwork and industrial usage), rebar and metal (packed and shrunk for hauling), and ordinary household burn material (wrapped in burrito-style tarp, loaded onto trucks, and covered again with tarp). These are then trucked and hauled to various sites. The operation spans the entire Palisades Fire burn zone, which extends down PCH into Malibu. Coastal homes along PCH are being cleared at a swift pace and PCH has been reduced to two lanes (one in each direction). Lot clearance with heavy machinery takes up one full coastal (southbound) lane, mudslide debris clearance (as well as utility work along the road) takes up one full mountainside (northbound) lane, and a narrow center is left for vehicles. The congestion is intense but seemingly necessary to complete debris clearance quickly so our communities can get on to rebuilding.